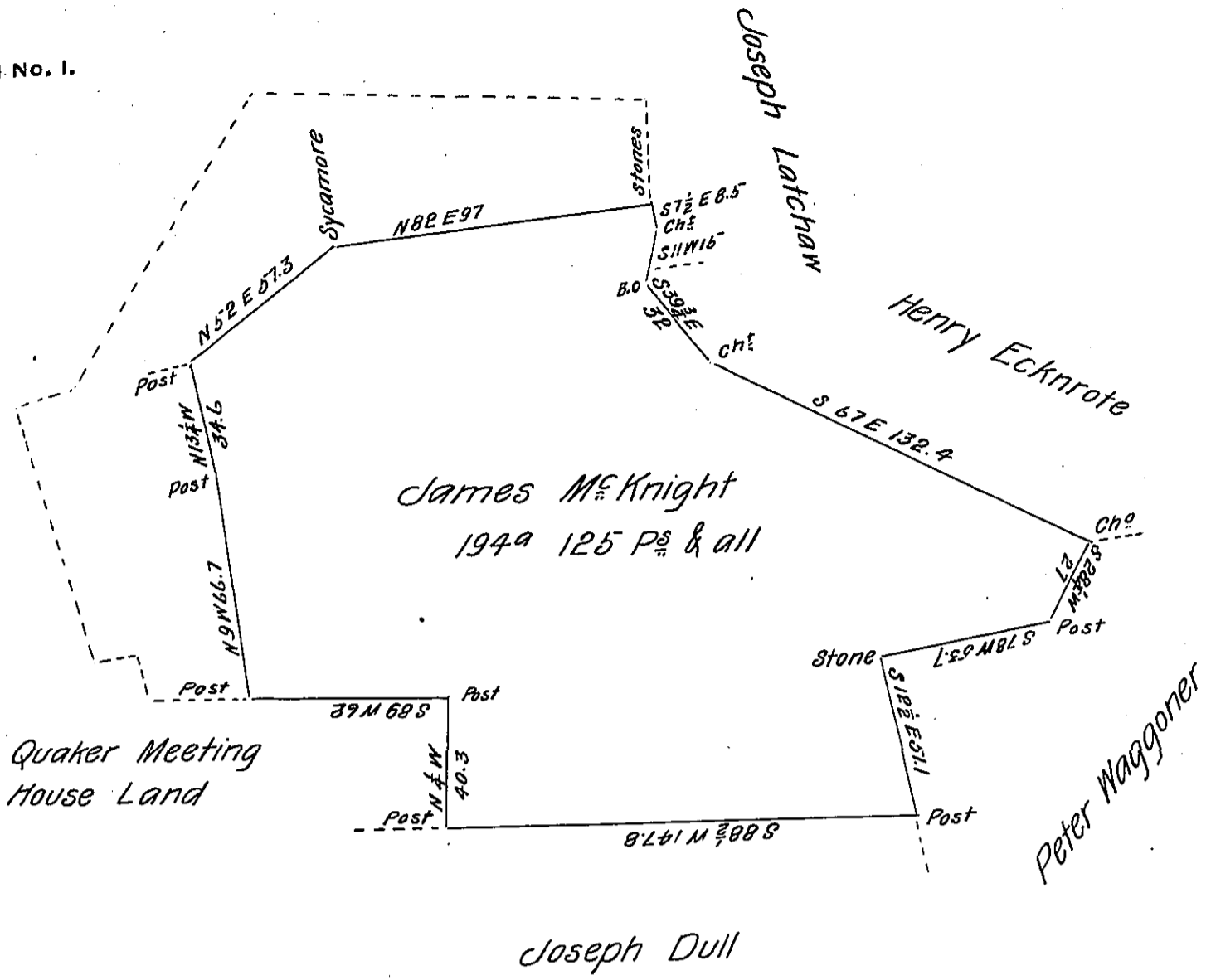


FORM No. 1.



Situated part in Manallen and part in Tyrone Township Adams County and is part of a tract of land said to contain 267<sup>a</sup> 20 P<sup>s</sup> & all. Surveyed by William Matthews on Warrant to James McKnight dated the 29<sup>th</sup> day of October 1762. Surveyed and divided from the residue the 28<sup>th</sup> day of April 1836.

By I Robinson D. S

To John Taylor Esq

~~To Jacob Spangler Esq~~

Surveyor General.

IN TESTIMONY that the above is a copy of the original remaining on file in the Department of Internal Affairs of Pennsylvania, made conformably to an Act of Assembly approved the 16th day of February, 1833, I have hereunto set my Hand and caused the Seal of said Department to be affixed at Harrisburg, this sixth day of February 1906.

*Isaac R. Brown*  
Secretary of Internal Affairs.